

ENSURE WATER TIGHT SEAL AT CABLE ENTRY. IF REQUIRED INCREASE DIAMETER OF CABLE WITH HEAT SHRINK TUBE

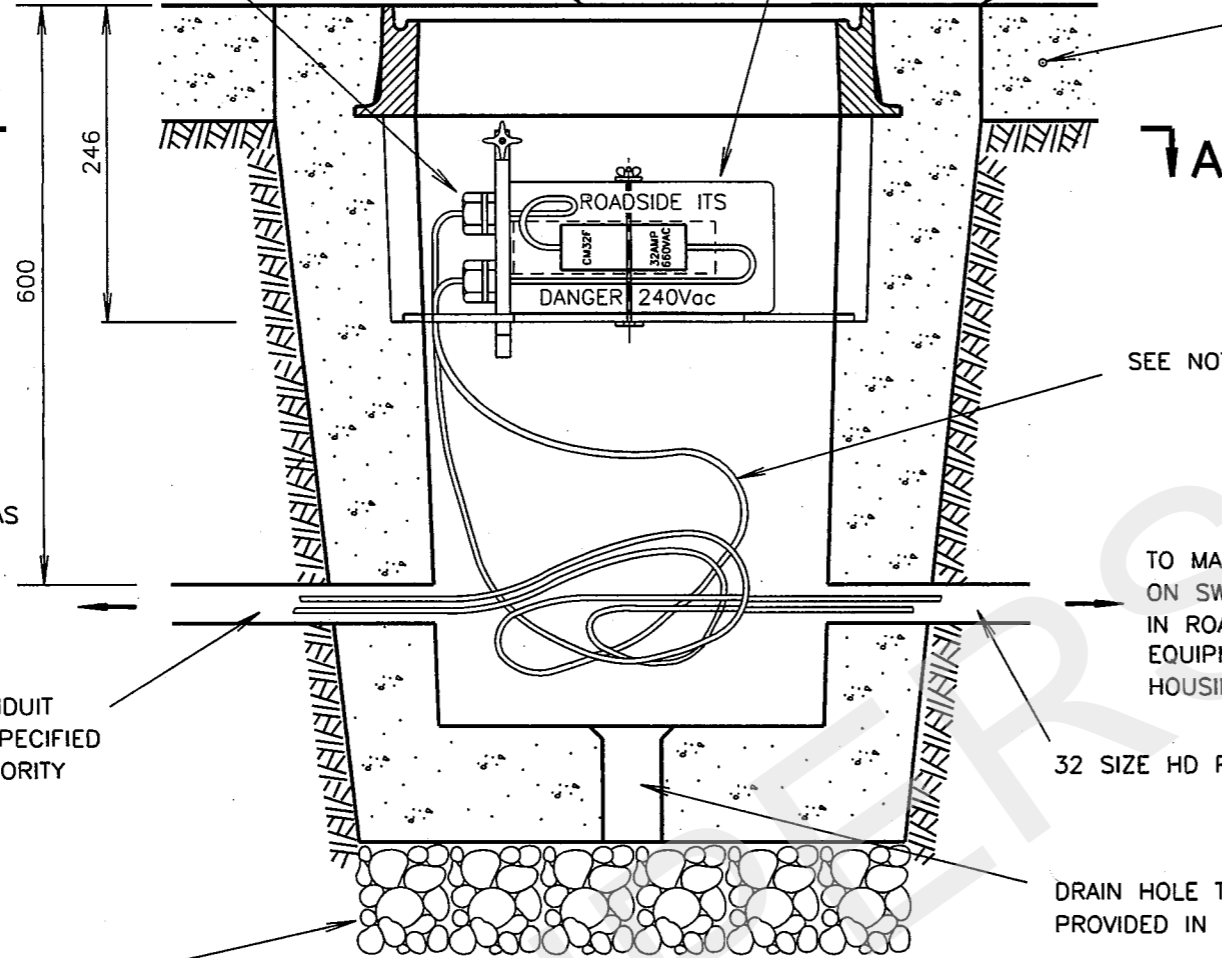
PAVEMENT JUNCTION BOX COVER FRAME (COVER NOT SHOWN) SEE PLAN VM016-10

ASSEMBLY OF U/G FUSE ENCLOSURE. SEE NOTE 1

SAWCUT FOOTPATH 600 x 600mm

CONCRETE PAVEMENT

A



TO SUPPLY AUTHORITY POINT OF CONNECTION (LENGTH TO BE KEPT AS SHORT AS POSSIBLE)

32 SIZE HD PVC CONDUIT UNLESS OTHERWISE SPECIFIED BY THE SUPPLY AUTHORITY

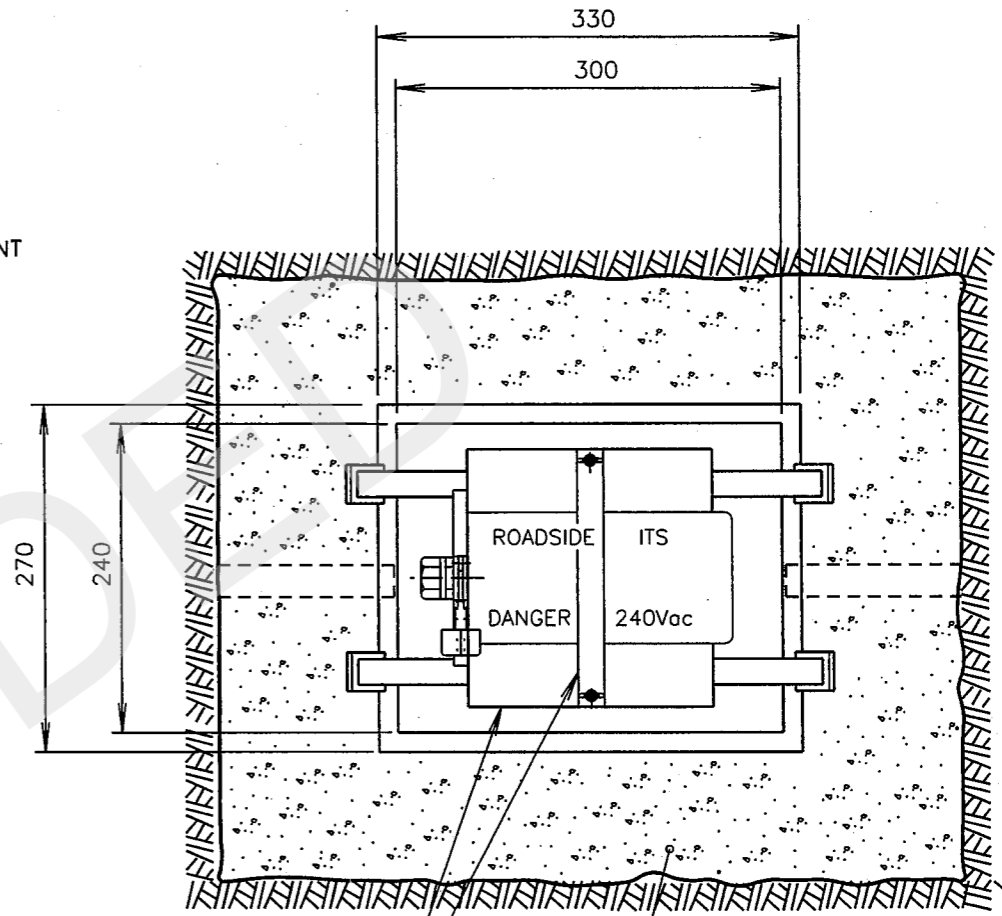
AGGREGATE 200mm DEEP TO BE INSTALLED WHERE SOIL CONDITIONS REQUIRE

SEE NOTE 3

TO MAIN FUSE ON SWITCHBOARD IN ROADSIDE EQUIPMENT HOUSING

32 SIZE HD PVC CONDUIT

DRAIN HOLE TO BE PROVIDED IN BOTTOM OF PIT



SUPPORTING CRADLE & SECURING BRACKET SEE PLAN VM052-5 (REFER NOTE 2)

PJ BOX FOOTING SEE PLAN VC007-4

SECTION A-A

CABLES REMOVED FOR CLARITY

- NOTES:-
1. FOR UG FUSE ENCLOSURE DETAILS & MATERIAL LIST REFER TO PLAN VE500-17
 2. THE SUPPORTING CRADLE WITH SECURING BRACKET IS A SEPARATE ITEM AS PER PLAN VM052-5.
 3. (a) ALL CONDUCTORS TO BE 7/1.04 (6mm²) SINGLE CORE DOUBLE INSULATED IN ACCORDANCE WITH AS 3147.
(b) ACTIVE AND NEUTRAL CABLES ARE TO HAVE 1.5 METRES OF SLACK COILED UP IN THE FUSE PIT AS SHOWN.

DIMENSIONS IN MILLIMETRES

'A' ORIGINAL ISSUE

REFERENCE DRAWINGS	
U/G FUSE ASSEMBLY	VE500-17
PJ BOX	VC007-4
SUPPORT CRADLE	VM052-5

ROADS & MARITIME SERVICES INTELLIGENT TRANSPORT SYSTEMS	
INSTALLATION OF UNDERGROUND FUSE BOX FOR ROADSIDE EQUIPMENT HOUSING (REFERENCED BY SPECIFICATION TSI-SP-012)	

SCALE	
SUPERSEDES:	ISSUE C
DRAWN	LC. 27-02-2017
CHECKED	BWT. 27-02-17
PASSED	BWT. 27-02-2017

APPROVED: 28-02-2017	
T. YUNG	
MANAGER STANDARDS & EQUIP.	
ISSUE	A
VE500-16	